



**dex-tek**  
GROUP

**HARMONY RESIDENCE 2**



HARMONY 2

# VERGINA - ARADIPPOU AREA

Fast on the heels of the sell out success of Harmony Residence, we now bring you Harmony Residence II. This exquisite project with modern stylish design features, both internally and externally, comprises 9 apartments of one bed, and two bedroom. The project also boasts, storage rooms and covered parking for all apartments. All fixtures and fittings are of high grade on this A class project and include granite worktops.

Harmony Residence II is located in the Vergina area which is in very close proximity to the La sports stadium, the new Metropolis Mall and Larnaca's New Hospital. There is also an array of schools, supermarkets, entertainment facilities and other local amenities in the area along with direct access to the highway network.

This is an opportunity well worth considering.

A' Class energy efficient building

Number of apartments: 9

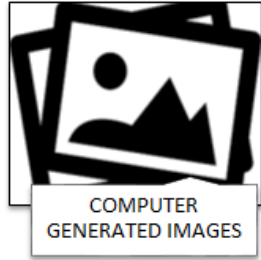
Completion: Under Study



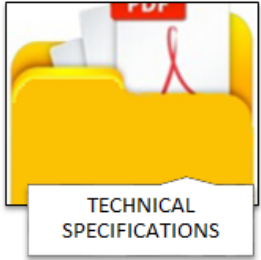
CONSTRUCTION  
PROGRESS



FLOOR PLANS



COMPUTER  
GENERATED IMAGES

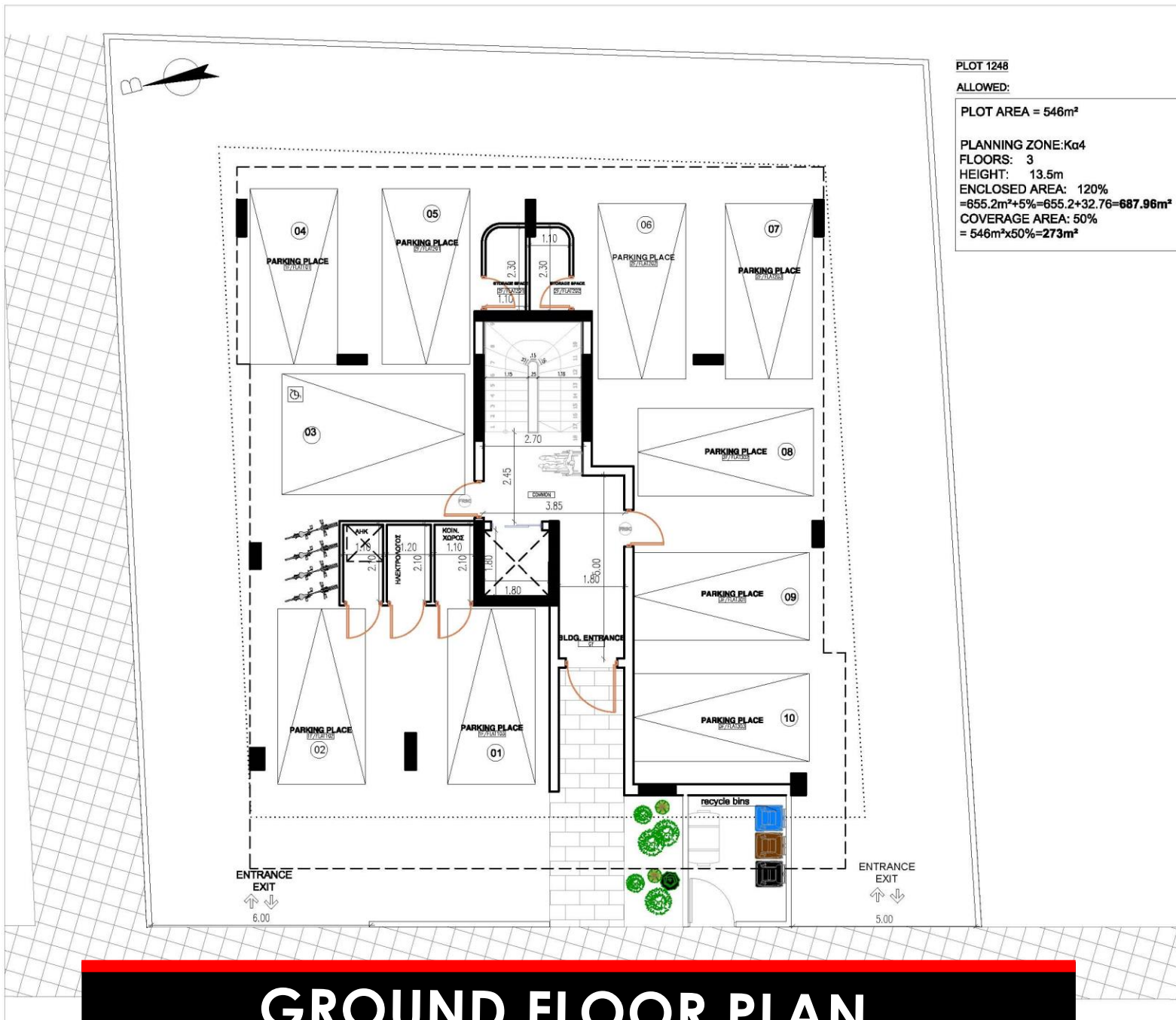


TECHNICAL  
SPECIFICATIONS



APT NO.	FLOOR LEVEL	BEDS	BATH/R	INTERNAL AREA m <sup>2</sup>	COVERED BALCONY m <sup>2</sup>	UNCOVERED BALCONY	ROOF GARDEN m <sup>2</sup>	STORAGE & PARKING	TOTAL AREA m <sup>2</sup>
101	1st	2	2	83.25	22.75	2.15	0.00	YES	<b>108.15</b>
102	1st	2	2	83.00	21.25	5.55	0.00	YES	<b>109.80</b>
103	1st	1	1	50.15	13.80	0.00	0.00	YES	<b>63.95</b>
201	2nd	2	2	83.25	22.75	0.00	0.00	YES	<b>106.00</b>
202	2nd	2	2	83.00	21.25	0.00	0.00	YES	<b>104.25</b>
203	2nd	1	1	50.15	13.80	0.00	0.00	YES	<b>63.95</b>
301	3rd	2	2	83.25	22.40	0.00	66.55	YES	<b>172.20</b>
302	3rd	2	2	83.00	20.80	3.50	74.75	YES	<b>182.05</b>
303	3rd	1	1	50.15	13.80	0.00	0.00	YES	<b>63.95</b>

# ARMONIA APARTMENTS



**PLOT 1248**  
**ALLOWED:**  
**PLOT AREA = 546m<sup>2</sup>**  
**PLANNING ZONE:Ka4**  
**FLOORS: 3**  
**HEIGHT: 13.5m**  
**ENCLOSED AREA: 120%**  
**=655.2m<sup>2</sup>+5%=655.2+32.76=687.96m<sup>2</sup>**  
**COVERAGE AREA: 50%**  
**= 546m<sup>2</sup>x50%=273m<sup>2</sup>**

**GROUND FLOOR PLAN**





# SECOND FLOOR PLAN



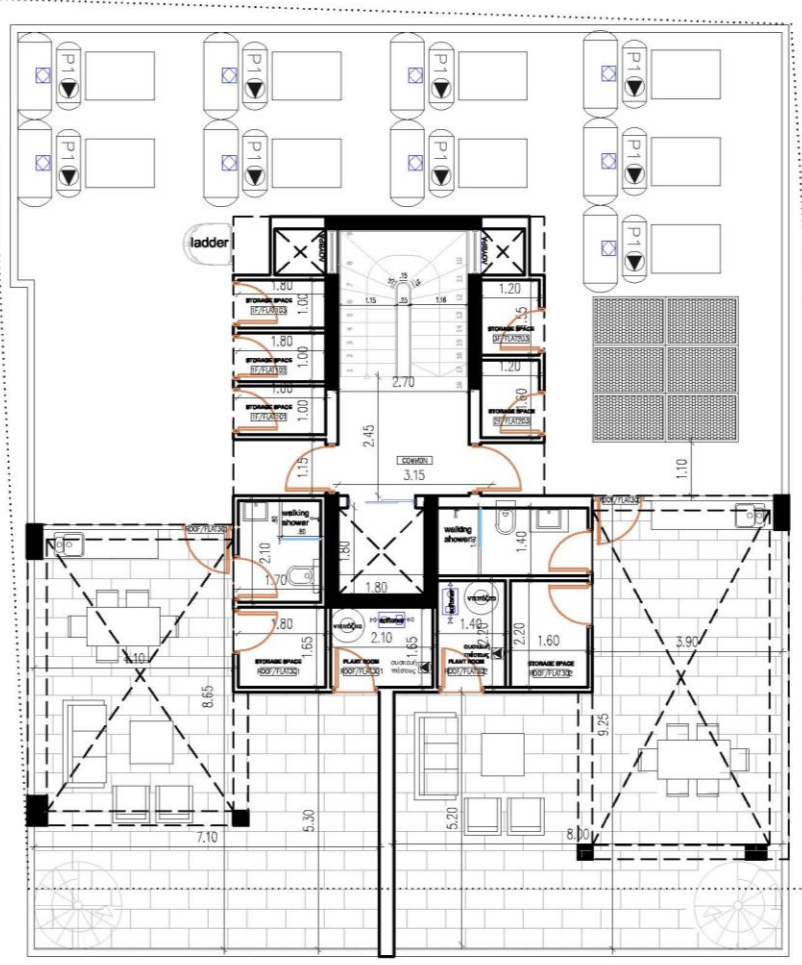
# THIRD FLOOR PLAN



ELEVATION C

ELEVATION B

ELEVATION D



ELEVATION A

ROOF GARDEN PLAN

# ROOF PLAN





## PHONE

+357 24258333  
77787009  
+357 97644024



## ADDRESS

Gladstonos 1 Office  
1, Panayiotio Megaro,  
6023 Larnaca, Cyprus



## EMAIL

[info@dextekconstructions.com](mailto:info@dextekconstructions.com)



## WEBSITE

[www.dextekgroup.com](http://www.dextekgroup.com)

**CONTACT US**

